

SC50T/ DH1800 BASIC TASK CHAIR

OPERATING INSTRUCTIONS



FEATURES

• HEIGHT ADJUSTMENT

To raise seat remove pressure from seat and lift lever (1). To lower seat height sit on chair and lift lever (1).

NOTE: It is normal for chair to slightly lower under body weight.

• BACKREST HEIGHT ADJUSTMENT

Loosen upper knob on Backrest post to raise or lower the height of Backrest. **TIGHTEN KNOB COMPLETELY.**

• SEAT DEPTH ADJUSTMENT

Loosen knob underneath chair, slide Back assembly in or out to desired position. **TIGHTEN KNOB COMPLETELY.**

WARNING

1. Use this product only one person at a time.
2. Do not use this chair unless all bolts, screws and knobs are securely tightened.
3. Check that all bolts screws and knobs are tight every three months or as needed.
4. Dispose of packing material properly. Do not use plastic cover as head covering. It may cause suffocation.
5. Do not use chair as a stepladder.
6. Use this chair for its intended purpose only.
7. Use mild detergent only for cleaning.

WARRANTY

Work Smart chairs are warranted from the date of purchase against failure due to material and workmanship as follows:

- 15 Years on all non-moving metal parts.
- 5 Years on component parts including Control mechanisms, pneumatic cylinders, wood, plastic parts, base and casters.
- 3 Years on upholstery fabric and foam against wear and deterioration.

To make a warranty claim, contact Parts Department. Provide model number and description of the problem and obtain return authorization. At it's option Office Star Products will:

- (a) Supply compatible components of current manufacture.
- (b) Repair the customer's component. The customer must prepay freight on any components returned to the factory.

Return freight on components still in warranty will be paid by Office Star Products.

**All warranties are limited to the original purchaser for normal commercial usage defined as a standard forty hour work week by persons weighing 250 lbs. or less. This warranty will not cover labor, freight or damage from misuse, abuse, negligence, alteration, accident, vandalism, rusting, acts of nature or any other event beyond the control of Office Star Products. The warranty does not cover cosmetic damage that may result from normal use. Liability for incidental or consequential damages is excluded. The user assumes all risk of injury resulting from use of this product. When usage is more than 40 hours per week, a two year warranty on all parts applies. Fabric and foam is warranted for one year.*

This warranty gives you specific legal rights, and you may also have other rights which vary from state to state.

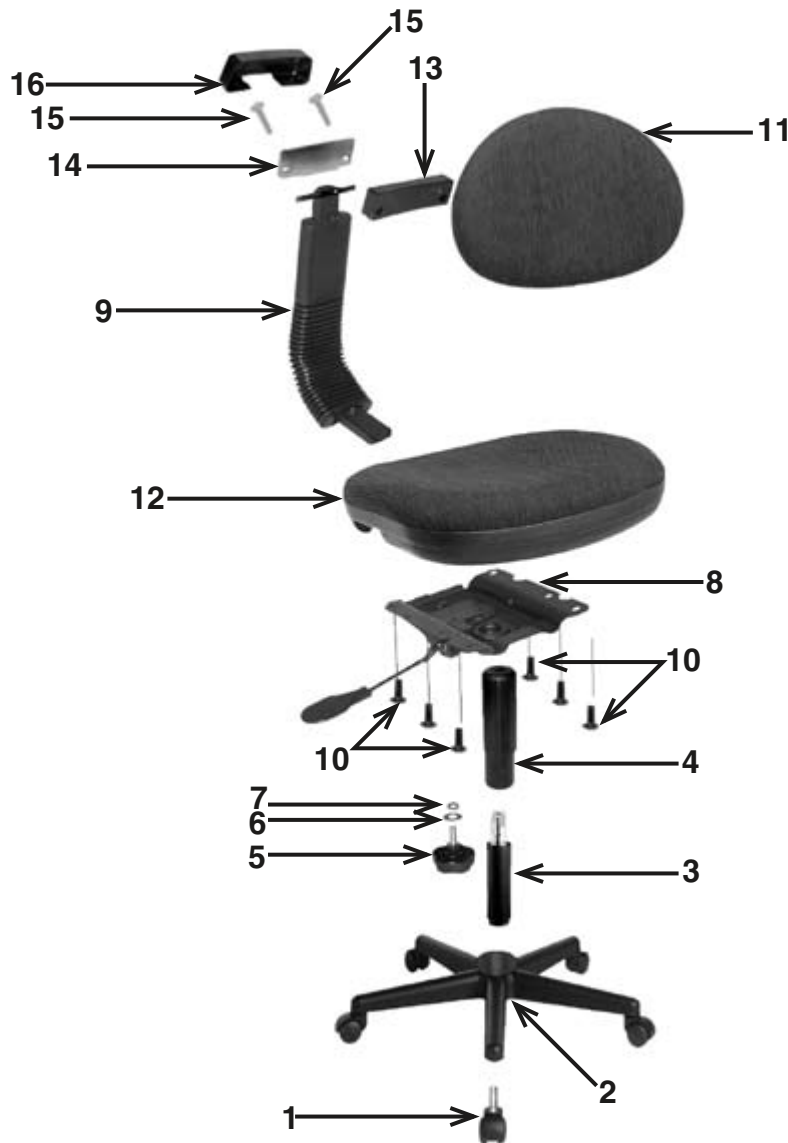
All Work Smart chairs are built to meet or exceed ANSI BIFMA standards.

Our quality standards are among the highest in the industry. Sometimes, no matter how hard we try, there are times when parts are damaged or missing. Our Parts Department will do everything possible to promptly remedy the problem. Contact us via e-mail parts@officestar.net, by Fax 1-909-930-5629, or toll free parts number 1-800-950-7262, Monday through Friday 8:00 a.m. - 5:00 p.m. Pacific Time.



SC50T/ DH1800 BASIC TASK CHAIR

ASSEMBLY INSTRUCTIONS



PARTS	QTY
1. Casters	5
2. Base	1
3. Pneumatic Cylinder	1
4. Plastic Bellows	1
5. Backrest Depth Adjustment Knob	1
6. Flat Washer	1
7. Lock Washer	1
8. Mechanism	1
9. Back Frame	1
10. Small Machine Screws	6
11. Back Rest	1
12. Seat	1
13. Backrest Plastic Plate	1
14. Backrest Metal Plate	1
15. Large Machine Screws	2
16. Backrest Plastic Cover	1

Remove all parts from carton, separate by part numbers indicated on parts list, and verify part quantities.

STEP 1 Insert five Casters (1) into Base (2), push hard until you feel or hear the Caster (1) snap into place.

STEP 2 Insert Pneumatic Cylinder (3) into Base (2), slide plastic Bellows (4) over Pneumatic Cylinder (3).

STEP 3 Align holes of Back Rest (11) to Backrest Plastic Plate (13). Place Back Frame (9) flush into Backrest Plastic Plate (13), align Backrest Metal Plate (14) and secure assembly with two Large Machine Screws (15). **FULLY TIGHTEN SCREWS.** Cover with Backrest Plastic Cover (16).

STEP 4 With arrows facing the front of chair attach Mechanism (8) to Seat (12) using six Small Machine Screws (10). Slide Back Frame (9) with attached Back Rest (11) between Seat (12) and Mechanism (8). Secure with Backrest Depth Adjustment Knob (5) through Flat Washer (6) and Lock Washer (7). **FULLY TIGHTEN ALL SCREWS AND KNOB.**

STEP 5 Place Upper assembled portion of chair onto Pneumatic Cylinder (3) and apply downward pressure.

ATTENTION: MAKE SURE ALL SCREWS ARE FULLY TIGHTENED BEFORE USING CHAIR